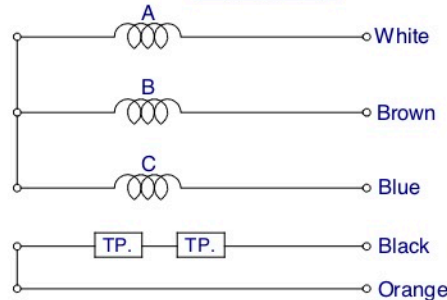


DATA TEST NO.	W443-2089-SL	
APPLICABLE MODEL	PM3102373	
SPECIFICATION	NO. OF PHASE	3 PHASE
	NO. OF POLE	6 P.
	RATED RPM.	50Hz 940 60Hz ---
	VOLTAGE	415 V.
	CURRENT	1.85 A.
	OUTPUT	375 W.
WINDING RESISTANCE (REF. 20")	EFFICIENCY	64.5 %
	WHITE-BROWN LEAD	25.10 Ω
	BROWN-BLUE LEAD	25.10 Ω
	WHITE-BLUE LEAD	25.10 Ω
THERMAL PROTECTOR	17AM - 150°C Refer P/N.R330-0035	
INSULATION CLASS	B	
METHOD OF COOLING	A.O.M.	
DEGREE OF PROTECTION	IP44	
WEIGHT	8.85 KGS.	



STICKER RCG



- Notes :
1. After the motor is complete, applied rust proof oil (Caltex oil) at shaft end.
 2. The tensile strength of each lead wire at least 4 Kgs.
 3. The runout of the shaft end circumference 0.08 mm.

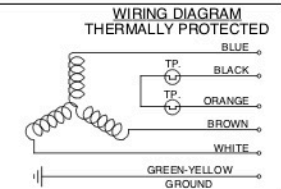
RCT85-3756S-TE-D02TS

0.375kW , 6P , 1.85Amp	Cap. - mfd	Frame 48
415V , 3Ph , 50Hz	Rating Cont	Mounting Lug
Rpm 940	Ins. Class B	Serial No. xxxxxxxxxx

NAMEPLATE

WARNING

MOTOR FITTED WITH INTERNAL AUTO RESET OVERLOAD AND MAY RESTART WITHOUT WARNING



DIAGRAM

THIS DRAWING MAY BE USED IN WHOLE OR PART ,PROVIDED THE PIONEER MOTOR NAME & LOGO ARE VISIBLE IN ANY REPRODUCTION.

THIRD ANGLE PROJECTION	FINISH:	DESCRIPTION:	REFER TO :
	ASSEMBLY	MOTOR OUTLINE	QR2700 ECN No.7495
	ROYCECROSS	Q'TY 1	APPLICATION OUTDOOR MOTOR
NON SCALES			