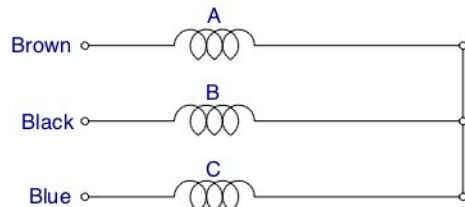


DATA TEST NO.		W443-1563-SL		
APPLICABLE MODEL		PM3102181 A1		
SPECIFICATION	NO. OF PHASE	3 PHASE		
	NO. OF POLE	6 P.		
	RATED RPM.	50Hz	890	
		60Hz	---	
	VOLTAGE	415 V.		
CURRENT	1.10 A.			
OUTPUT	370 W.			
EFFICIENCY	---			
WINDING RESISTANCE	BROWN-BLACK LEAD	40.64 Ω		
	BLACK-BLUE LEAD	40.64 Ω		
	BROWN-BLUE LEAD	40.64 Ω		
(REF. 20")				
INSULATION CLASS		B		
METHOD OF COOLING		A.O.M.		
DEGREE OF PROTECTION		IP54		
WEIGHT		7.75 KGS.		



STICKER RCG

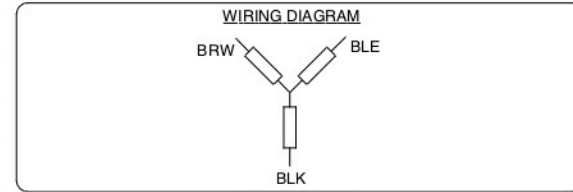


ROTATION : CW,CCW (LE)

- Notes :
1. After the motor is complete, applied rust proof oil at shaft end.
 2. The tensile strength of each lead wire at least 4 Kgs.
 3. The runout of the shaft end circumference 0.08 mm.

RCT85-3706S-TE-B02T			
0.37kW , 6P , 1.1Amp	Cap. - mfd	Frame 48	
415V , 3Ph , 50Hz	Rating Cont	Mounting Res.mt	
Rpm 890	Ins. Class B	Serial No. xxxxxxxxx	

NAMEPLATE



DIAGRAM

THIS DRAWING MAY BE USED IN WHOLE OR PART ,PROVIDED THE PIONEER MOTOR NAME & LOGO ARE VISIBLE IN ANY REPRODUCTION.

THIRD ANGLE PROJECTION	FINISH:		DESCRIPTION:		REFER TO :
	ASSEMBLY		MOTOR OUTLINE		ECN No.7321
	ROYCECROSS		INDOOR MOTOR		ECN No.7495
NON SCALES	Q'TY	APPLICATION	Group Code:		
	1	INDOOR MOTOR	FF85B		