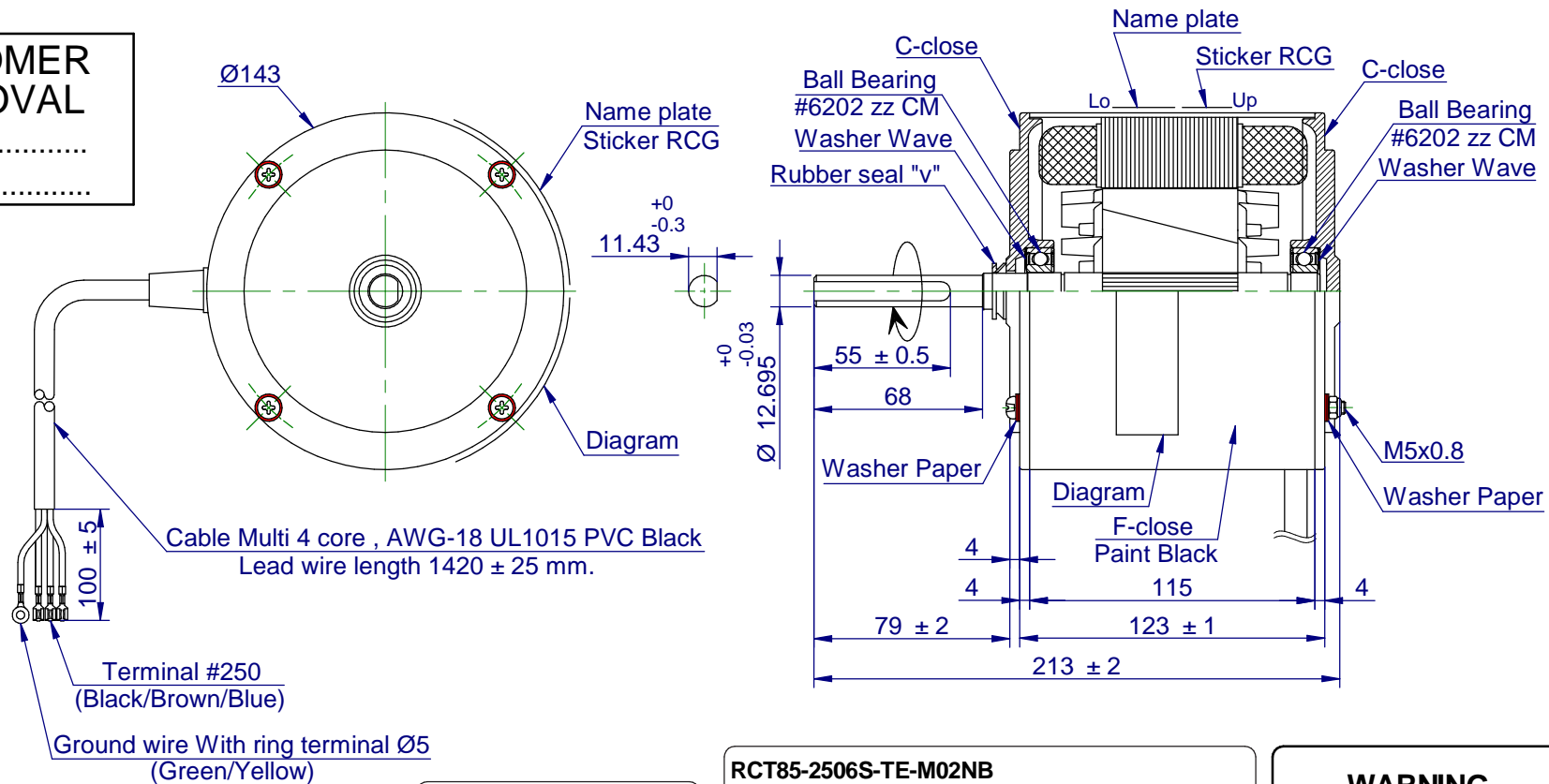


**CUSTOMER
APPROVAL**

BY.....
DATE.....

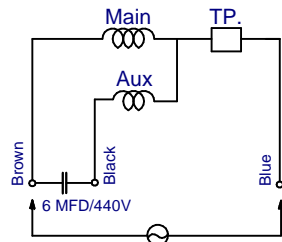


Remark : Grease Alvania RLQ2 -25~+120 Low noise

DATA TEST NO.			W443-1510-SL	
APPLICABLE MODEL			PM310376 A2	
SPECIFICATION	NO. OF PHASE		1 PHASE	
	NO. OF POLE		6 P.	
	RATED RPM.	50Hz	915	
		60Hz	---	
	VOLTAGE		240	V.
	CURRENT		2.6	A.
OUTPUT		250	W.	
WINDING RESISTANCE	M COIL		10.68	Ω
	S COIL		59.79	Ω
	SP1 COIL		---	Ω
	SP2 COIL		---	Ω
(REF. 20°)				
THERMAL PROTECTOR			17AM - 150°C Refer P/N.R330-0035	
INSULATION CLASS			B	
METHOD OF COOLING			A.O.M.	
DEGREE OF PROTECTION			IP54	
WEIGHT			7.25 KGS.	



STICKER RCG



Remark : Part No. Capacitor R330-4095

Notes :

1. After the motor is complete, applied rust proof oil at shaft end.
2. The tensile strength of each lead wire at least 4 Kgs.
3. The runout of the shaft end circumference 0.08 mm.

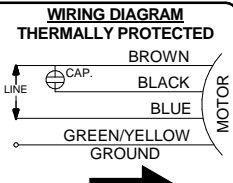
RCT85-2506S-TE-M02NB

0.25kW , 6P , 2.6Amp	Cap. 6 mfd	Frame 48
240V , 1Ph , 50Hz	Rating Cont	Mounting Nil
Rpm 915	Ins. Class B	Serial No. DDDMMYYYYXX

NAMEPLATE

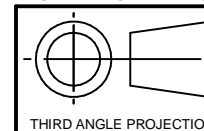
WARNING

MOTOR FITTED WITH INTERNAL AUTO RESET OVERLOAD AND MAY RESTART WITHOUT WARNING



DIAGRAM

THIS DRAWING MAY BE USED IN WHOLE OR PART ,PROVIDED THE PIONEER MOTOR NAME & LOGO ARE VISIBLE IN ANY REPRODUCTION.



NON
SCALES

ENGINEERING DEPARTMENT			
PIONEER MOTOR PUBLIC COMPANY LIMITED			
FINISH:	DESCRIPTION:		REFER TO :
ASSEMBLY	MOTOR OUTLINE		PM310376 A1 ECN No.9136
CUSTOMER:	Q'TY	APPLICATION	Group Code:
ROYCECROSS	1	INDOOR MOTOR	FF85B
DRAWN	DESIGNED	CHECKED	APPROVED
THANATCHA	KITTISAK	EKAPHOP	WEERAPAN
31/07/17	31/07/17	31/07/17	31/07/17
Storage Location ; H:\Appd DWG\Outline\FF85B		DWG.&Part No.	Rev.No.
		PM310376 A2	1
		Sheet : 1 of 2	