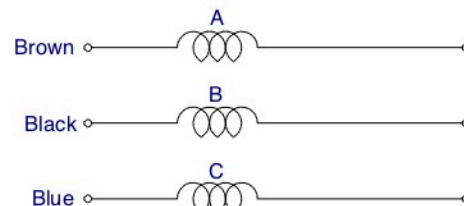


DATA TEST NO.		W443-1564-SL
APPLICABLE MODEL		PM3104155 A1
SPECIFICATION	NO. OF PHASE	3 PHASE
	NO. OF POLE	4 P.
	RATED RPM.	50Hz 1400 60Hz ---
	VOLTAGE	415 V.
	CURRENT	0.75 A.
WINDING RESISTANCE	OUTPUT	180 W.
	EFFICIENCY	55.3 %
	BROWN-BLACK LEAD	73.44 Ω
	BLACK-BLUE LEAD	73.44 Ω
(REF. 20")		
INSULATION CLASS		B
METHOD OF COOLING		A.O.M.
DEGREE OF PROTECTION		IP54
WEIGHT		4.57 KGS.



STICKER RCG



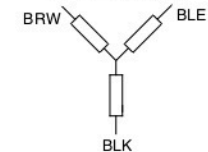
ROTATION : CW,CCW (LE)

- Notes :
1. After the motor is complete, applied rust proof oil at shaft end.
 2. The tensile strength of each lead wire at least 4 Kgs.
 3. The runout of the shaft end circumference 0.08 mm.

RCT85-1804S-TE-M02T			
0.18kW , 4P , 0.75Amp	Cap. - mfd	Frame	48
415V , 3Ph , 50Hz	Rating	Cont	Mounting Nil
Rpm 1400	Ins. Class	B	Serial No. xxxxxxxxxx

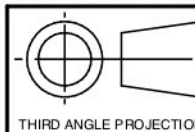
NAMEPLATE

WIRING DIAGRAM



DIAGRAM

THIS DRAWING MAY BE USED IN WHOLE OR PART ,PROVIDED THE PIONEER MOTOR NAME & LOGO ARE VISIBLE IN ANY REPRODUCTION.



NON
SCALES

FINISH:		DESCRIPTION:		REFER TO :
ASSEMBLY		MOTOR OUTLINE		ECN No.7321 ECN No.7495
ROYCECROSS		Q'TY	APPLICATION	Group Code:
		1	OUTDOOR MOTOR	FF85B