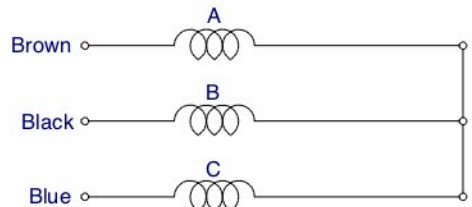


DATA TEST NO.		W443-1564-SL		
APPLICABLE MODEL		PM3104154 A1		
SPECIFICATION	NO. OF PHASE	3 PHASE		
	NO. OF POLE	4 P.		
	RATED RPM.	50Hz	1400	
		60Hz	---	
	VOLTAGE	415 V.		
CURRENT	0.75 A.			
OUTPUT	180 W.			
EFFICIENCY	55.3 %			
WINDING RESISTANCE	BROWN-BLACK LEAD	73.44	Ω	
	BLACK-BLUE LEAD	73.44	Ω	
	BROWN-BLUE LEAD	73.44	Ω	
(REF. 20")				
INSULATION CLASS		B		
METHOD OF COOLING		A.O.M.		
DEGREE OF PROTECTION		IP54		
WEIGHT		4.57 KGS.		



STICKER RCG

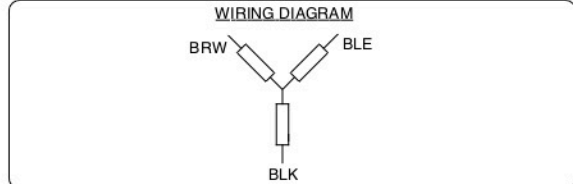


ROTATION : CW,CCW (LE)

- Notes :
1. After the motor is complete, applied rust proof oil at shaft end.
 2. The tensile strength of each lead wire at least 4 Kgs.
 3. The runout of the shaft end circumference 0.08 mm.

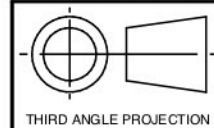
RCT85-1804S-TE-F02T			
0.18kW , 4P , 0.75Amp	Cap.	- mfd	Frame 48
415V , 3Ph , 50Hz	Rating	Cont	Mounting Pad
Rpm 1400	Ins. Class	B	Serial No. xxxxxxxxxx

NAMEPLATE



DIAGRAM

THIS DRAWING MAY BE USED IN WHOLE OR PART ,PROVIDED THE PIONEER MOTOR NAME & LOGO ARE VISIBLE IN ANY REPRODUCTION.



THIRD ANGLE PROJECTION

NON SCALES

FINISH:	DESCRIPTION:	REFER TO :
ASSEMBLY	MOTOR OUTLINE	ECN No.7495
ROYCECROSS	Q'TY 1	APPLICATION OUTDOOR MOTOR
		Group Code: FF85B